

# Therapy

## PROGRAMS



### Individual/Family

#### Five-Day

#### Assisted Dolphin Interactions

Dolphin Swim • Dolphin Paint  
Dock Interaction • Shallow Water

#### Virtual Dolphin Experiences

### Group

#### Assisted Dolphin Interactions

Dolphin Swim • Dock Interaction  
Shallow Water • Veteran



ISLAND  
DOLPHIN  
CARE

## Individual/Family

# Five-Day Program

This family-oriented program is designed to provide therapeutic intervention to children (3+ yrs old) and adults with disabilities, illnesses, and unique challenges. This dual component program consists of time in one of our individual classrooms and time in the water with our dolphin family. The therapy team reviews each application thoroughly to customize the program to meet the specific needs and strengths of the participant. The relationship developed throughout the five days with the dolphins may foster growth in areas such as self-esteem, attention, trust of others, and motivation to continue attempting new tasks. Families are typically at the facility two hours per day. The program is offered year-round; however, please take into account that the water temperatures vary throughout the year. Assistive equipment provided when needed.

**Cost \$3,000 - Photos Included**



## Classroom Activities

- Four individualized sessions
- Each session addresses the goals of the participant and family
- Sessions last 45 minutes
- Goes hand-in-hand with the water sessions
- Various forms of art, play and other activities are designed to enhance fine and gross motor skills, encourage socialization, teach basic academic skills, address sensory needs and motivate communication

## In-Water Sessions

- Four individualized sessions
- 5th day consists of a family shallow-water experience
- Participant interactions one-on-one with the dolphins and staff
- Sessions last 20 minutes
- Sessions are based on utilizing traditional therapy methods paired with the motivation inspired by the dolphins





Individual/Family

## Assisted Dolphin Interactions

This program is an opportunity to learn about IDC's facility and therapy program. Participants interact with our dolphin family with the assistance of a therapy team member. We offer a variety of options based on interest. Guests are at IDC approximately one hour.

**Availability is limited. Digital link to photos is \$60.**

### Dolphin Swim

- \$250 per participant
- 20 minute session
- Application required

### Dolphin Paint

- \$100 for the first participant and \$50 for each additional participant
- 10-15 minute session
- \$20 per lagoon-side observer

### Dock Interaction

- \$100 per participant
- 10-15 minutes on the dock
- \$25 per lagoon-side observer

### Shallow Water

- \$180 per participant
- 10-15 minute shallow-water interaction
- Private platform
- \$20 per lagoon-side observer

Individual/Family

## Virtual Dolphin Experiences

The sessions last around 30 minutes and include a short tour of the IDC facility along with a 10-15 minute dolphin interaction. Each experience is individualized based on the interests of the participant(s). Storytime alongside a dolphin is also an option.

**\$50 per visit. Virtual paint sessions are also available for \$75.**



## Group

# Assisted Dolphin Interactions

These programs are designed for small groups (typically twelve participants) and vary based on the participants and their goals. Combining therapeutic goals with a sense of joy is what we strive for. Bringing a group together in a fun and unique setting can often increase socialization and self-confidence. The therapy team will provide assistance when needed.

Group programs are traditionally scheduled on Fridays but exceptions do occur.

## Dolphin Swim



- Includes a 15-minute dolphin swim, visit to the open top aquarium, lunch, and therapeutic art project
- Application required
- Contact for details and pricing

## Dock Interaction



- Includes a 10-15 minute dolphin interaction from the dock, visit to the open top aquarium, lunch, and therapeutic art project
- Contact for details and pricing

## Shallow Water



- Includes a 15-minute dolphin swim, visit to the open top aquarium, lunch, and therapeutic art project
- Contact for details and pricing

## Veteran



- Available to veterans and their families
- Includes a 15-minute dolphin swim, visit to the open top aquarium, lunch, and art project
- Contact for details



# THANK YOU

---

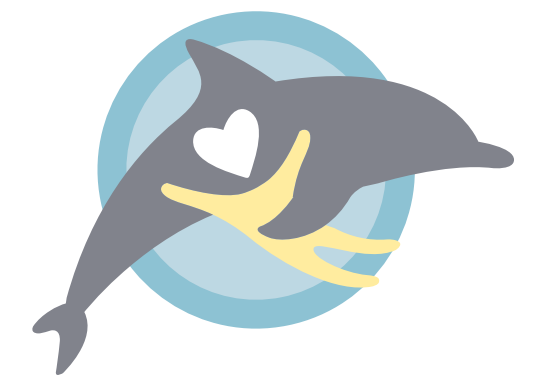
FOR MORE INFORMATION PLEASE CONTACT:

---

305-451-5884

150 Lorelane Place, Key Largo, FL 33037

[IDCKeyLargo.org](http://IDCKeyLargo.org)



ISLAND  
DOLPHIN  
CARE